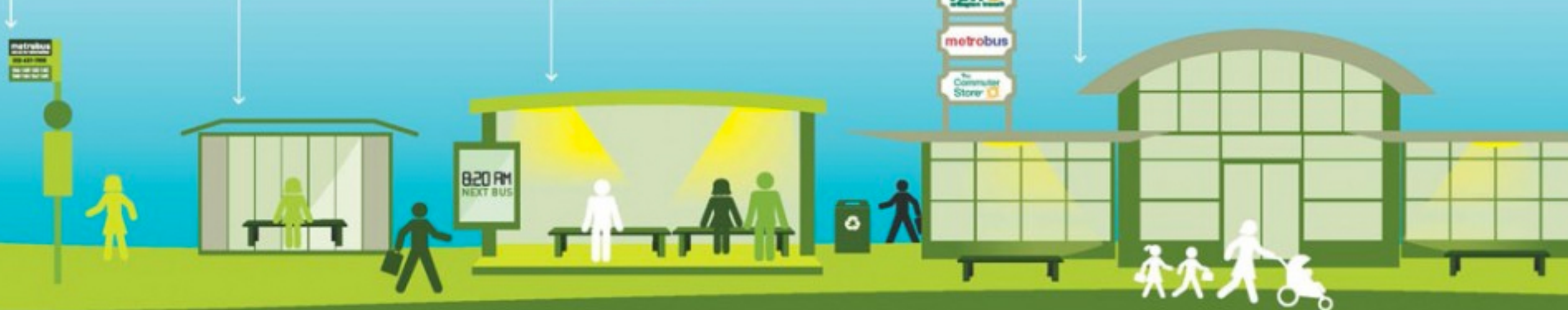


Bus Stop and Transit Station Types

The following table provides a hierarchy of the ADA-compliant transit station/stop types and range of approximate costs associated with the construction of these new facilities.

BASIC BUS STOP	SHELTERED BUS STOP	TRANSIT STATION STOP	BUS TRANSIT CENTER
<p>Elements: Bus Stop Sign Paved Boarding Area Information/Schedule Sidewalk Connection Street Lighting</p> <p>Approximate cost: \$3,000 - \$10,000</p> <p>Mode: Bus</p> <p>Typical Ridership: Less than 40 daily passenger boardings</p>	<p>Elements: Bus Stop Sign Paved Boarding Area Information/Schedule Sidewalk Connection Small Shelter/Seating Trash Receptacle Bus Bay or Curb Extension Lighting & Real-Time Display</p> <p>Approximate cost: \$10,000 - \$30,000</p> <p>Mode: Bus, Bus Rapid Transit (BRT)</p> <p>Typical Ridership: 40 to 100+ daily passenger boardings</p>	<p>Elements: Station Signage Raised Platform/Level Boarding Information/Schedule/System Map Pedestrian Facilities Lighting Large Shelter/Seating Trash Receptacle(s)</p> <p>Approximate cost: \$450,000 - \$2.5 million</p> <p>Mode: Bus, BRT, Streetcar, Light Rail Transit (LRT)</p> <p>Typical Ridership: 250 to 1000+ daily passenger boardings</p> <p>Example: Walter Reed Super Stop</p>	<p>Elements: Information/Schedule/System Map Lighting & Security Trash Receptacle(s) Off-Street Bus Bays Real-Time Display Branding Elements Distinctive Design Off-board fare payment Enclosed Waiting Areas/Restrooms Park-and-Ride Lot/Garage Bicycle Access/Parking Kiss-&-Ride/Taxi Facilities Enhanced Passenger Amenities Information/Commuter Center</p> <p>Approximate cost: \$5 million - \$50 million</p> <p>Mode: Bus, BRT</p> <p>Typical Ridership: 1000+ daily passenger boardings</p> <p>Example: Shirlington Station</p>



Transit stop and station types can range from a basic bus stop to a full-size transit center comparable to large rail terminals. The type of facility depends on a number of parameters, including transit service mode, passenger demand, surrounding land use and available right of way. There are a variety of transit stops and stations in Arlington.